

DRY-RUNNING VANE VACUUM PUMPS

CE
97/23/EC

NERO

DRY-RUNNING VANE VACUUM PUMPS



VAKUUM BOHEMIA s.r.o.

Lidická kolonie 47, 586 01 Jihlava, t: +420 567 322 487
e: info@vakuum-bohemia.cz, www.Vakuum-Bohemia.cz

VAKUUM BOHEMIA SK s.r.o.

Stredánská 3631/65, 955 01 Topolčany, t: +421 907 313 800
e: info@vakuum-bohemia.sk, www.Vakuum-Bohemia.sk



Industrial standard

Dry-running vane vacuum pumps



Industrial standard

- absolutely oil-free
- suitable for permanent (24/7) operation
- suitable for installing in a machine
- excellent price/performance ratio



Simple design:

- tried and tested technology
- simple design
- compact version
- clean vacuum, free of oil
- combined versions available



Convenient service:

- service team
- vacuum pumps in stock
- service parts in stock
- substitute vacuum pumps available for rent upon outages
- phone support line



Universal usage

- extensive product line
- standardized vacuum pump series
- work possible even at high pressures
- integrated air filter

Applications

Dry-running vane vacuum pumps



Vacuum fastening:

vacuum for suction cups, fastening permeable materials, underpressure source for manipulation robots, CNC machines, machining centers

Packaging and automation:

packaging vacuum machines, automatic assembly machines, robotic worksites, feeding machines, filling machines, underpressure source for exhaust systems

Printing industry:

vacuum for printing machines, polygraphic machines, paper feeders, sheet separators, combined versions - underpressure and blowing sources

Gas and air transport:

air transport, gas transport, air supplies for machinery, exhausts from machinery, strong blowing

Wood processing:

vacuum for CNC wood machining centers, suction-based connection using MDF panels, furniture production, feeders for wooden parts



Sales and service

Dry-running vane vacuum pumps



20 years of experience in the field

We have been supplying the Czech and Slovak market with top quality, highly reliable vacuum pumps and blowers since 1998. We are professionals in the area of designing and supplying vacuum pumps and implementing vacuum systems.



10,000 items in stock

We have a complete range of vacuum pumps of various types and sizes in stock. We also stock the most commonly worn parts and parts required for servicing and general repairs.



7 of the 10 largest companies in the Czech Republic

We work for 7 of the 10 largest companies in the Czech Republic. Our customers include large multinational corporations, but also medium and small enterprises and skilled designers and engineers. Let us help you succeed too



Warranty and post-warranty service

We provide warranty and post-warranty service for customers in the Czech Republic and Slovakia. We also carry out emergency and preventive general repairs. We have most of our service parts in our Jihlava warehouse. We provide contract and occasional service.



Rental shop

We have new and reconditioned vacuum pumps and blowers in stock. If you are not sure which type of vacuum pump is right for you, you can opt for a trial purchase. We also offer hire to prototype manufacturers.



Complete service

We offer complete services, from design to operational service. Operating parameters calculation. Proposal/design of suitable vacuum pumps Calculating energy intensity. Filtration, distribution and accessories.

Overview of the vacuum pumps

Dry-running vane vacuum pumps



Vacuum pumps up to 8 m³/h

Small, compact, dry-running vacuum pumps, ideal for an integration into other machines. The vacuum pumps are ideal as an underpressure source and for handling small or tight parts.



Model	Pumping speed [m³/hour]	Max. vacuum [mbar]	Output power [kW]
NV 4.4	4	150	0,18
NV 4.8	8	150	0,35

Vacuum pumps up to 40 m³/h

The compact, dry-running vacuum pumps form an industrial standard. The vacuum pumps represent an ideal choice for a majority of automatic industrial machines and packaging lines.

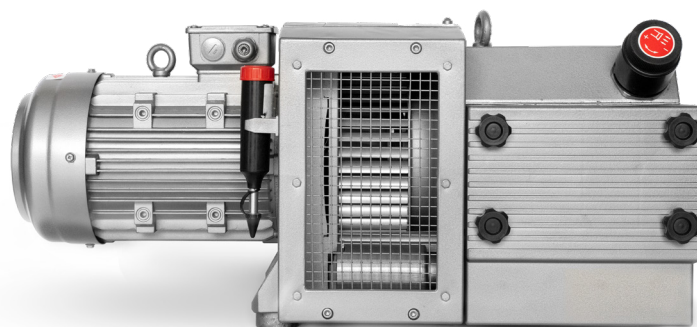


Model	Pumping speed [m³/hour]	Max. vacuum [mbar]	Output power [kW]
NV 4.10	10	150	0,37
NV 4.16	16	150	0,55
NV 4.25	25	150	0,75
NV 4.40	40	150	1,25

Vacuum pumps up to 140 m³/h

Industrial vacuum pumps are used as underpressure sources for larger parts, permeable parts or continuously running machines.

Model	Pumping speed [m³/hour]	Max. vacuum [mbar]	Output power [kW]
NV 3.60	56	100	2,4
NV 3.80	68	100	2,4
NV 3.100	98	100	3
NV 3.140	130	100	4



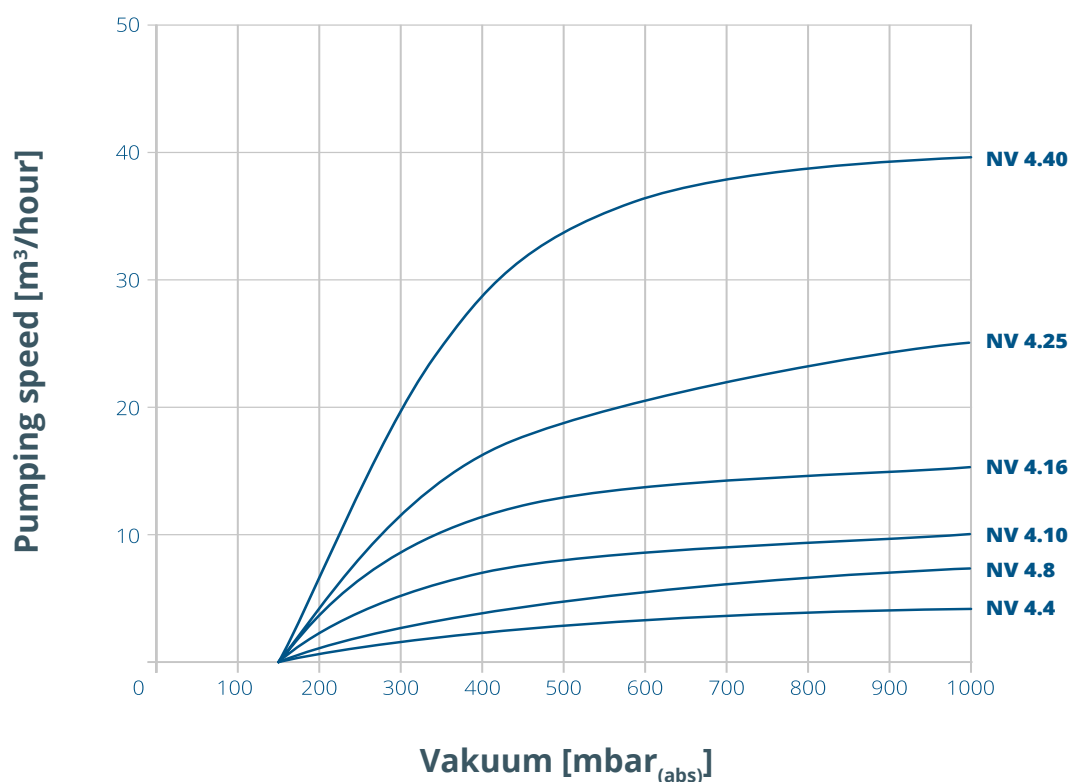
Compact, dry-running vacuum pumps

NV 4.4 – NV 4.40



Pumping characteristic

(8 m³/h - 40 m³/h)



Technical data

Model	Pumping speed [m ³ /h·ur]	Max. vacuum [mbar]	Output power [kW]	Noise level [dB]	Weight [kg]	Engine versions	Speed [rpm]
NV 4.4	4	150	0,18	59	7	1 fáze a 3 fáze	2880
NV 4.8	8	150	0,35	60	12	1 phase and 3 phases	1440
NV 4.10	10	150	0,37	58	22	1 phase and 3 phases	1440
NV 4.16	16	150	0,55	59	26	1 phase and 3 phases	1440
NV 4.25	25	150	0,75	60	31	1 phase and 3 phases	1440
NV 4.40	40	150	1,25	65	38	3 phases	1440

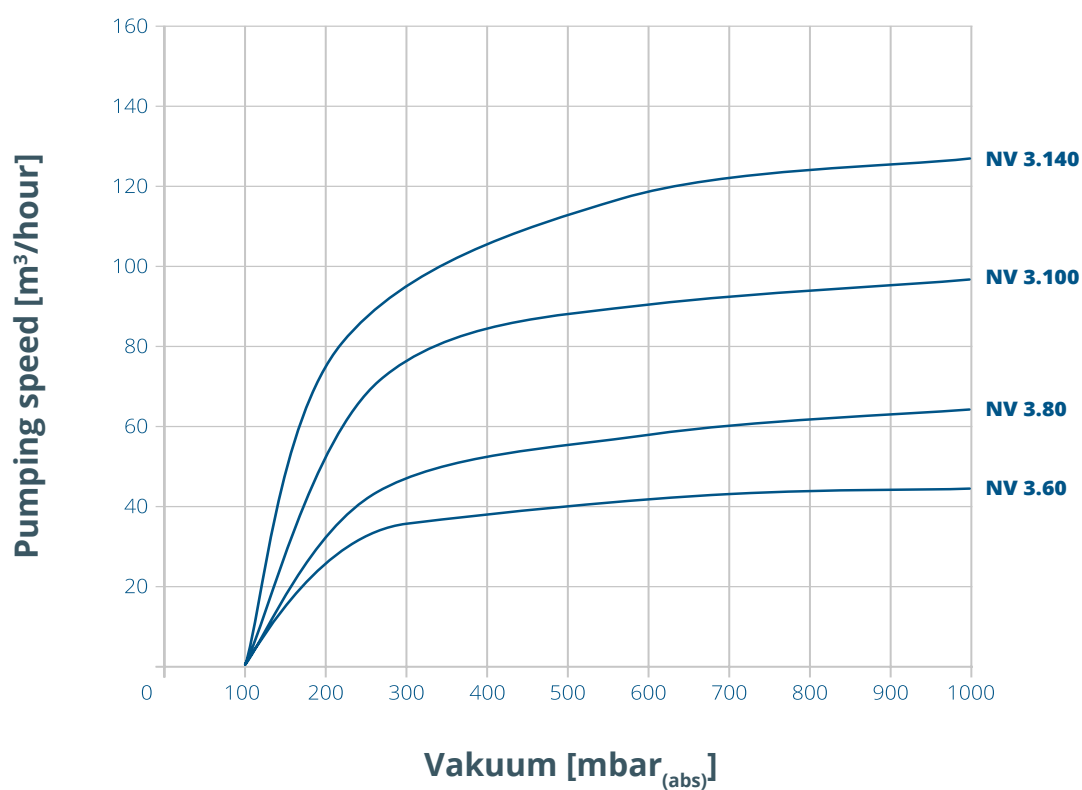
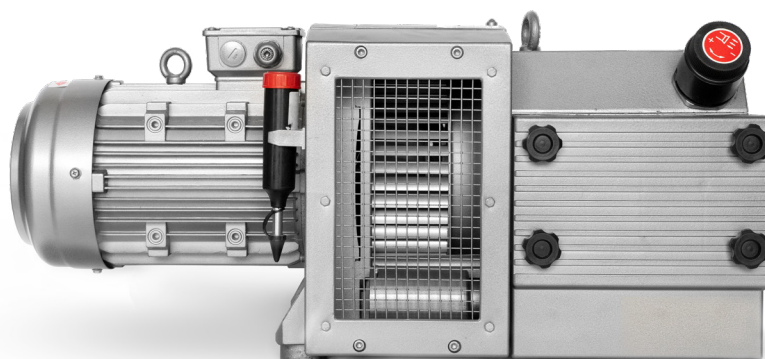
Robust, dry-running vacuum pumps

NV 3.60 – NV 3.140



Pumping characteristic

(60 m³/h - 140 m³/h)



Technical data

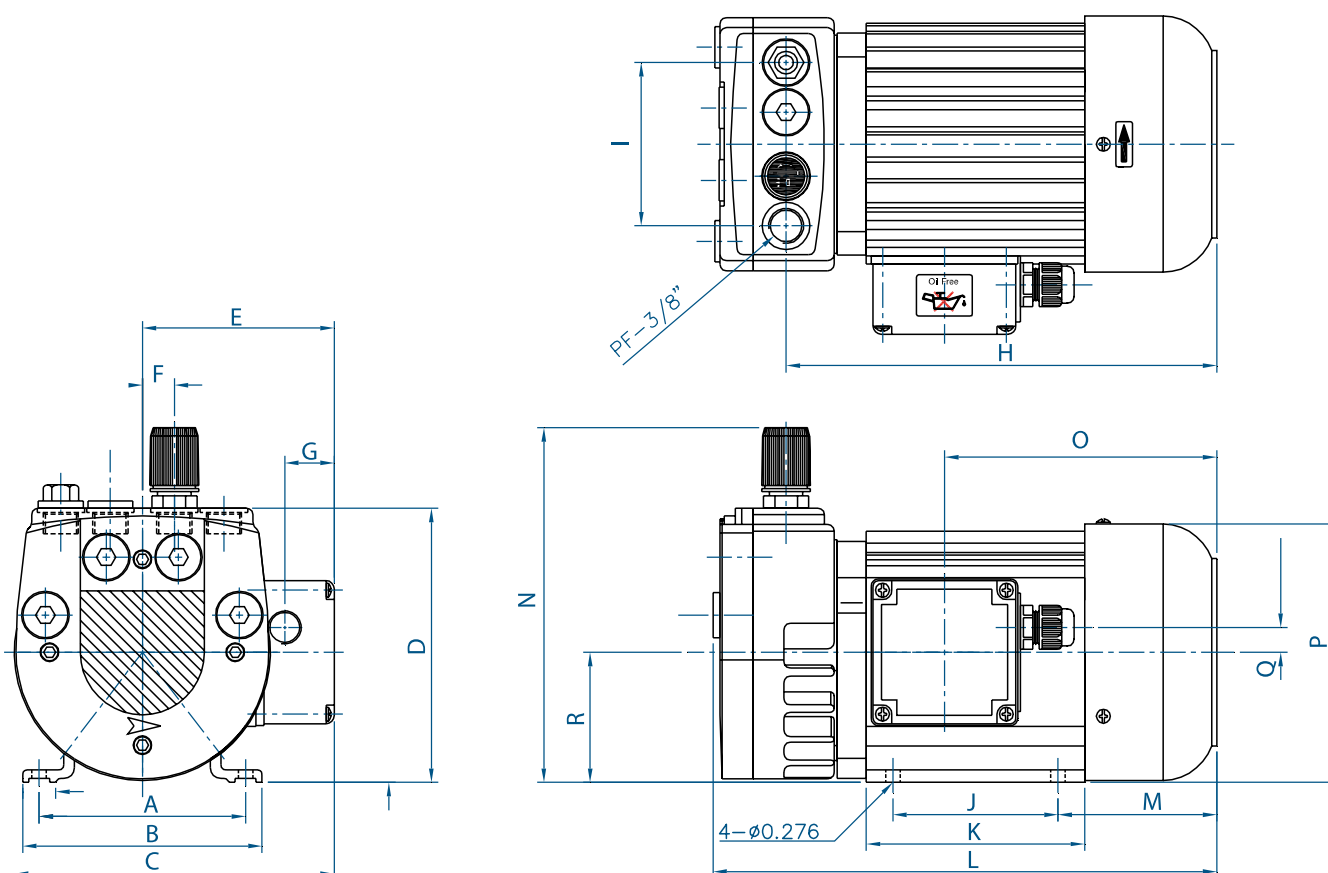
Model	Pumping speed [m ³ /h ^{°ur}]	Max. vacuum [mbar]	Output power [kW]	Noise level [dB]	Weight [kg]	Engine versions	Speed [rpm]
NV 3.60	56	100	2,4	70	69	3 phases	1420
NV 3.80	68	100	2,4	71	70	3 phases	1420
NV 3.100	98	100	3	74	102	3 phases	1420
NV 3.140	130	100	4	76	113	3 phases	1420

Dimensions

NV 4.4 – NV 4.8



Diagram



Dimensions in mm

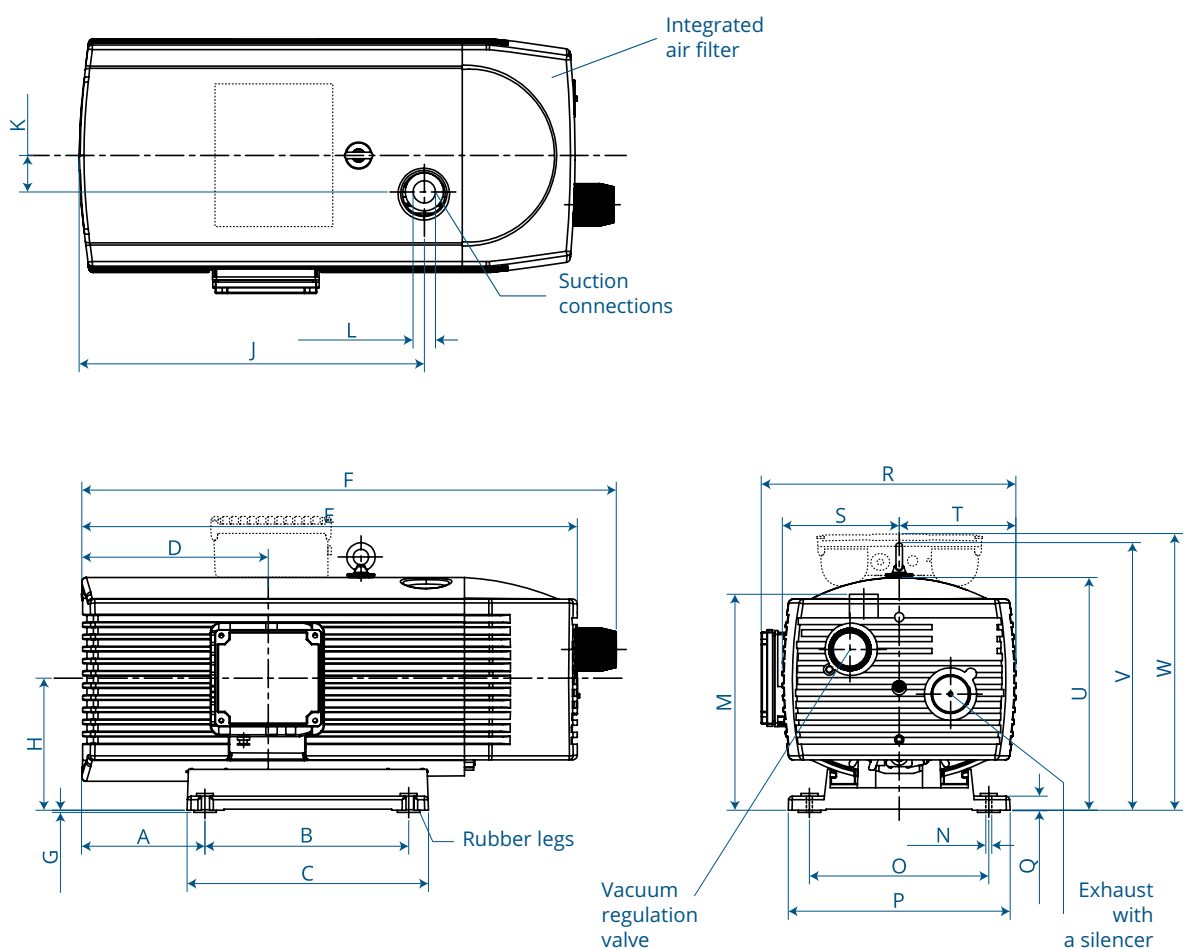
Model	A	B	C	D	E	F	G	H	I	J	K	L	M	N	O	P	Q	PF
NV 4.4	100	116	154	126	92	75	24	208	75	80	116	240	62	148	140	125	12	1/4
NV 4.8	100	116	155	133	93	75	24	225	79	80	126	260	93	158	149	125	12	3/8

Dimensions

NV 4.10 - NV 4.40



Diagram



Dimensions in mm

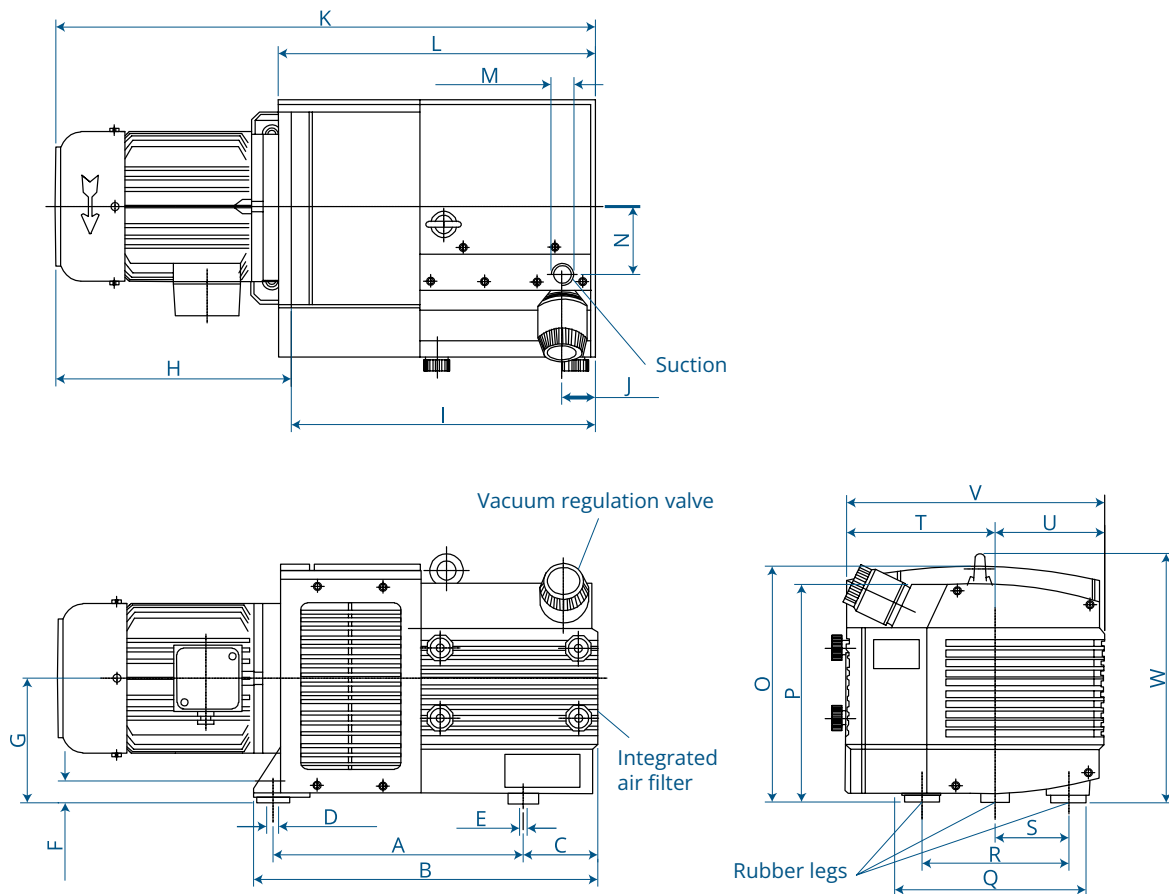
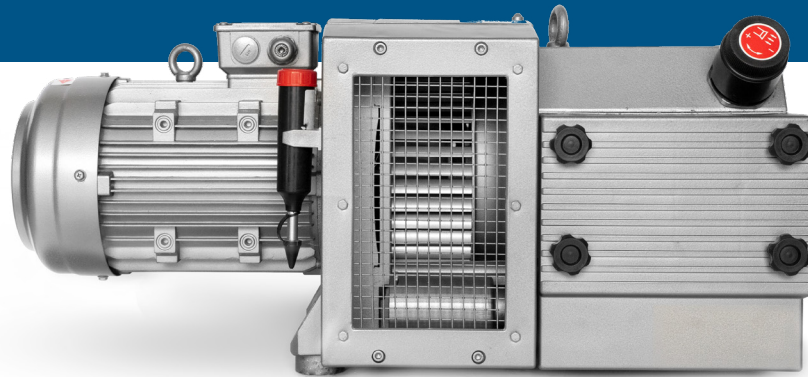
Model	A	B	C	D	E	F	G	H	J	K	L	M	N	O	P	Q	R	S	T	U	V	W
NV 4.10	60	205	244	118,5	387	426	3	107	257	35	G1/2"	182,5	Ø 7	128	156	15	202	89	89	189	192	277
NV 4.16	70	205	244	151,5	415	454	3	113	289	35	G1/2"	182,5	Ø 7	128	156	15	225	102	102	182,5	208	277
NV 4.25	101	220	260	170	465	502	3	140	300	40	G3/4"	226	Ø 7	198	240	15	252	125	125	227	292	317
NV 4.40	136	220	260	195,5	531	570	3	140	362	40	G3/4"	226	Ø 7	198	240	15	270	125	125	227	292	317



Dimensions

NV 3.60 – NV 3.140

Diagram



Dimensions in mm

Model	A	B	C	D	E	F	G	H	I	J	K	L	M	N	O	P	Q	R	S	T	U	V	W
NV 3.60	327	451	93,5	Ø 12	M8	33	162	330	401	49,5	731	419	G1"	65	314	275	235	190	95	189	150	355	331
NV 3.80	327	451	93,5	Ø 12	M8	33	162	330	401	49,5	731	419	G1"	65	314	275	235	190	95	189	150	355	331
NV 3.100	401,5	570	146,5	Ø 12	M8	33	162	398	527,5	60	925,5	543	G1-1/2"	95	376	235	295	245	134	232,5	221,5	470	382
NV 3.140	401,5	570	146,5	Ø 12	M8	33	162	398	527,5	60	925,5	543	G1-1/2"	95	376	235	295	245	134	232,5	221,5	470	382

Accessories

Dry-running vane vacuum pumps



Air filters

The filter is installed in front of the vacuum pump as a protection against suction of foreign particles, or in dusty environments. The air filter is also used to dampen the noise created by suction.



Vacuum regulation valve

The vacuum regulation valve sucks in a small volume of air, thus reducing the underpressure, created by the vacuum pump. By sucking air in, the vacuum pump lightens, thus reducing the electricity consumption.



Vacuum gauge:

Vacuum gauges are used for displaying the pressure at the vacuum pump suction mechanism. Pressure information allows the technologists to maintain product quality, indicates states for easier control and maintenance, and makes defect and leak indication within the technology easier. For this purpose, visual manometers or vacuum gauges are available.



Control unit:

The control is ideal for the central vacuum systems. Vacuum pump or a set of vacuum pumps runs automatically. The vacuum pump starts based on the set activation points in the control unit. The unit displays the current pressure on a digital display. The vacuum pump control system saves electricity.

VAKUUM BOHEMIA

Services

On-site service

The VAKUUM BOHEMIA team provides on-site service for all common types of industrial vacuum pumps. This concerns oil rotary vacuum pumps, liquid ring vacuum pumps, claw vacuum pumps, screw vacuum pumps, vacuum pumps with a reciprocating piston, Roots blowers and side channel blowers. VAKUUM BOHEMIA also provides warranty and post warranty repairs for all the vacuum pumps and vacuum systems it supplies. The parts for repairs are all in stock. Naturally there is operator training and equipment maintenance briefings for all deliveries of more complicated systems.

Other services

VACUUM BOHEMIA runs a vacuum pump hire service and offers reconditioned vacuum pumps. We have many years of experience with planning vacuum systems, the production of standardized vacuum assemblies and unique special-purpose machines. Our solutions are based on the individual requirements of each application and each customer.



Jihlava Service Center



VAKUUM BOHEMIA s.r.o.

Lidická kolonie 47, 586 01 Jihlava, tel.: +420 567 322 487
e-mail: info@vakuum-bohemia.cz, www.Vakuum-Bohemia.cz

VAKUUM BOHEMIA SK s.r.o.

Stredánská 3631/65, 955 01 Topoľčany, tel.: +421 907 313 800
e-mail: info@vakuum-bohemia.sk, www.Vakuum-Bohemia.sk

